



Unit 3, 24 Pembridge Square | Bayswater Paddington | London | W2 4DR

£1,500 Per Month

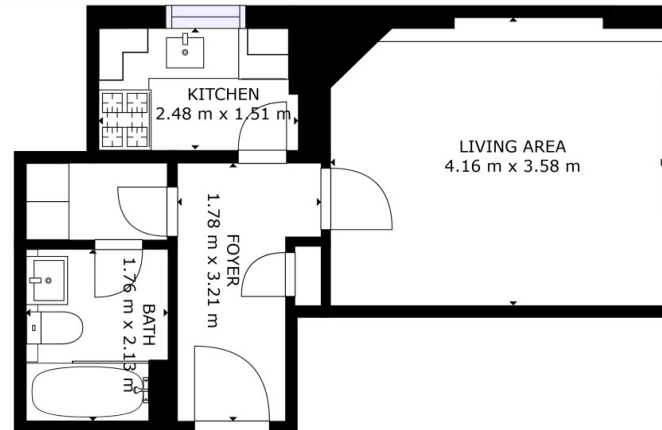


Unit 3, 24 Pembridge Square
| Bayswater Paddington
London | W2 4DR



Situated in the heart of Notting Hill, this well-presented studio apartment offers comfortable and convenient living in one of West London's most desirable neighbourhoods. Located on the lower ground floor, the property provides a quiet and private setting while remaining moments from the area's vibrant cafes, boutiques and green open spaces.

- Studio apartment in the heart of Notting Hill, W2
- Quiet lower ground floor position
- Bright open-plan living and sleeping area
- Large windows providing natural light
- Separate bathroom with bathtub and overhead shower
- Excellent transport links



FLOOR 1

GROSS INTERNAL AREA
FLOOR 1: 31 m²
TOTAL: 31 m²
SIZES AND DIMENSIONS ARE APPROXIMATE, ACTUAL MAY VARY.



Energy Efficiency Rating		Current	Potential
<i>Very energy efficient - lower running costs</i>			
(92 plus) A			
(81-91) B			
(69-80) C			
(55-68) D			68
(39-54) E		51	
(21-38) F			
(1-20) G			
<i>Not energy efficient - higher running costs</i>			
England & Wales		EU Directive 2002/91/EC	

Council Tax Band B
EPC Rating E

10 Cromwell Place
London
SW7 2JN
02038 650611
lettings@cityrelay.com